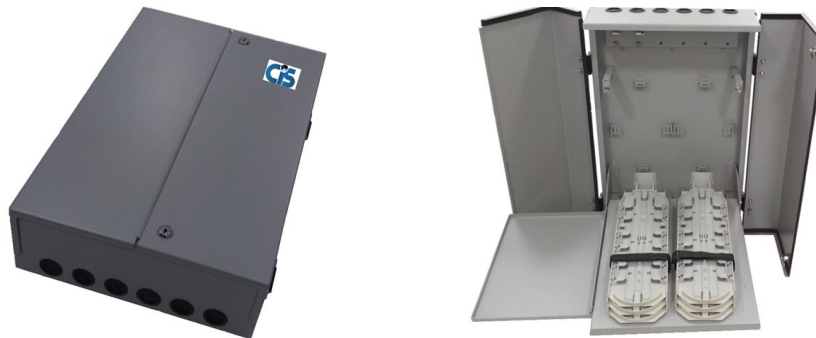


Wall-mount Splice Cabinet (WMSC)



CISFIBER Infra Solution's Wall-mount Splice Cabinet (WMSC) is an innovative mechanical wall-mount cabinet used to splice and store optical fiber cables. While a regular wall-mount splice cabinet needs to be brought down to complete the splicing, CIS new design enables splicing under installed condition itself on the wall where there's a proper place in the cabinet for holding splicing machine. Trays are in a horizontal position to enhance ease of operation and maintenance.

FEATURES / BENIFITS

- **Fiber trays in horizontal position** during operation
- **Provision to hold splicing machine.** Now splicing is also possible in the installed conditions
- Maximum splicing capacity of 192F
- **Big trays** with maximum capacity of 24F splicing with proper bend radius and fiber storage. No need to measure fiber length before splicing
- **12 nos. of cable entry/exits**
- Option of **FRP as well as cable holding** for each cable
- Separate Loose tube holding provision

APPLICATIONS

- Data Center, GMSC, MSC..
- Wide Area Network, POP Locations
- CATV
- Passive Optical Network
- Local Area Network
- FTTx applications

SPECIFICATIONS

Parameters	Values
Dimension (H x W x D)	514 x 340 x 117
Material	CRCA with Powder coating
Finish	Matt
No of cables Entries/Exit	12
Cable Entry	6 from top, 6 from Bottom
Loose Tube Storage Space	Separate Space Available
Cable Dia	5 to 18 mm
No of Splice Trays	2/4 for 48F, 4/8 for 96F, 8 for 196F
Splice / Tray	12/24
Splicing Machine Holding	Holding tray provided

Note: 2% tolerance to be considered for each dimension

Total Load bearing capacity of shelf for tray mounting: 100N

Total Load bearing capacity for splicing machine holding shelf: 25N

ORDERING GUIDE

WMSC-48-2	48F Splice Cabinet with 2 trays
WMSC-48-4	48F Splice Cabinet with 4 trays
WMSC-96-4	96F Splice Cabinet with 4 trays
WMSC-96-8	96F Splice Cabinet with 8 trays
WMSC-192-8	192F Splice Cabinet with 8 trays